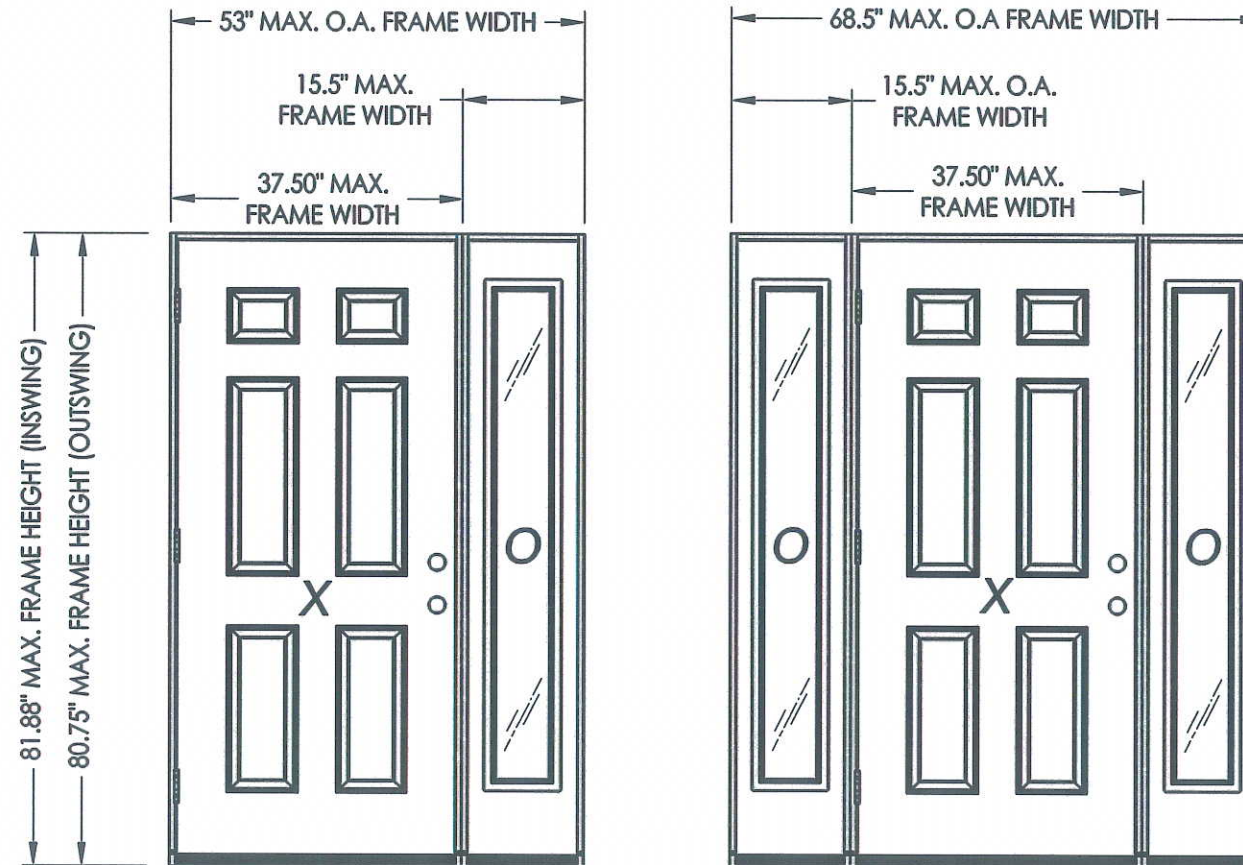


OPAQUE FIBERGLASS DOOR with SIDELITE(S) IN SWING / OUT SWING "NON-IMPACT"

GENERAL NOTES

1. This product has been evaluated and is in compliance with the 2010 Florida Building Code (FBC) structural requirements including the "High Velocity Hurricane Zone" (HVHZ).
2. Product anchors shall be as listed and spaced as shown on details. Anchor embedment to base material shall be beyond wall dressing or stucco.
3. When used in the "HVHZ" this product is required to be protected with an impact resistant covering that complies with Section 1626 of the 2010 FBC.
4. When used in areas outside of the "HVHZ" requiring wind borne debris protection this product is required to be protected with an impact resistant covering that complies with Section 1609.1.2 of the FBC.
5. For 2x stud framing construction, anchoring of these units shall be the same as that shown for 2x buck masonry construction.
6. Site conditions that deviate from the details of this drawing require further engineering analysis by a licensed engineer or registered architect.
7. Outswing configuration using threshold item #25 meet water infiltration requirements for "HVHZ".
8. Inswing configurations and outswing configuration using threshold item #27 do not meet the water infiltration requirements for the "HVHZ" and shall be installed only in non-habitable areas or at habitable locations protected by an overhang or canopy such that the angle between the edge of canopy or overhang to sill is less than 45 degrees.



Boxed Jamb Sidelites

| TABLE OF CONTENTS | |
|-------------------|--|
| SHEET# | DESCRIPTION |
| 1 | Typical elevations, design pressures & general notes |
| 2 | Door panel details |
| 3 | Sidelite panel details & glazing details |
| 4 | Sidelite panel details & glazing details |
| 5 | Elevations |
| 6 | Horizontal cross sections |
| 7 | Vertical cross sections |
| 8 | Vertical cross sections |
| 9 | Buck anchoring |
| 10 | Frame anchoring |
| 11 | Components |
| 12 | Bill of materials |

| CONFIGURATION | MAX. FRAME DIMENSION | JAMB TYPE | DESIGN PRESSURE (PSF) | |
|---------------|----------------------|-----------------|-----------------------|----------|
| | | | POSITIVE | NEGATIVE |
| OX/XO | 53.0" x 81.88" | WOOD | +60.0 | -70.0 |
| | | FIBERGLASS/COMP | +55.0 | -55.0 |
| OXO | 68.5" x 81.88" | WOOD | +55.0 | -55.0 |
| | | FIBERGLASS/COMP | +55.0 | -55.0 |

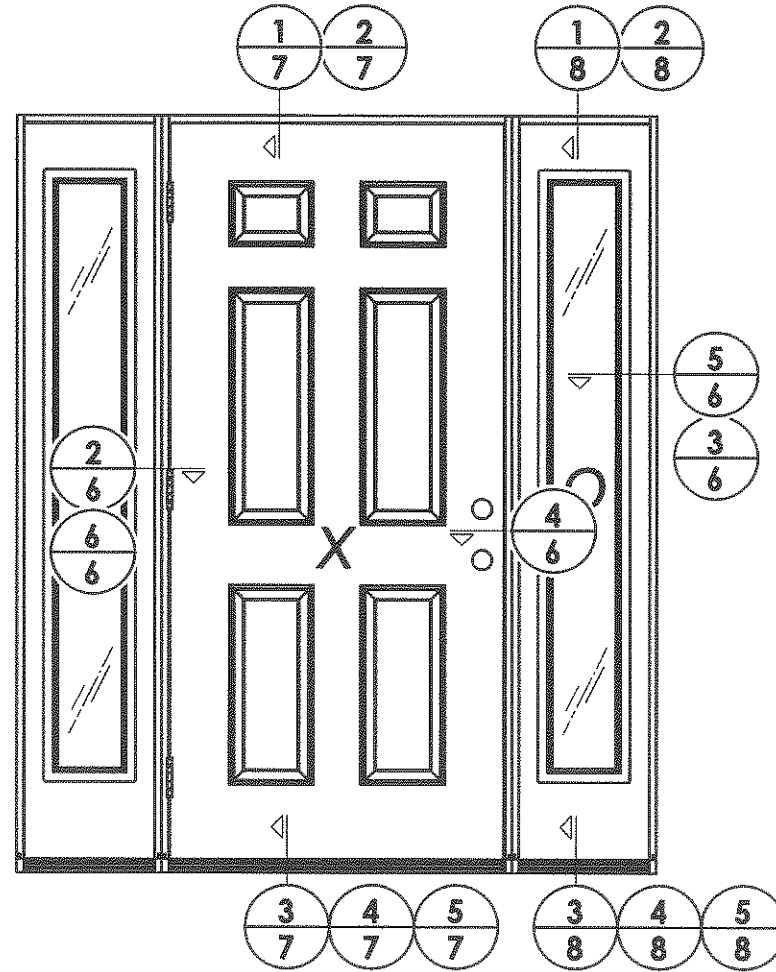
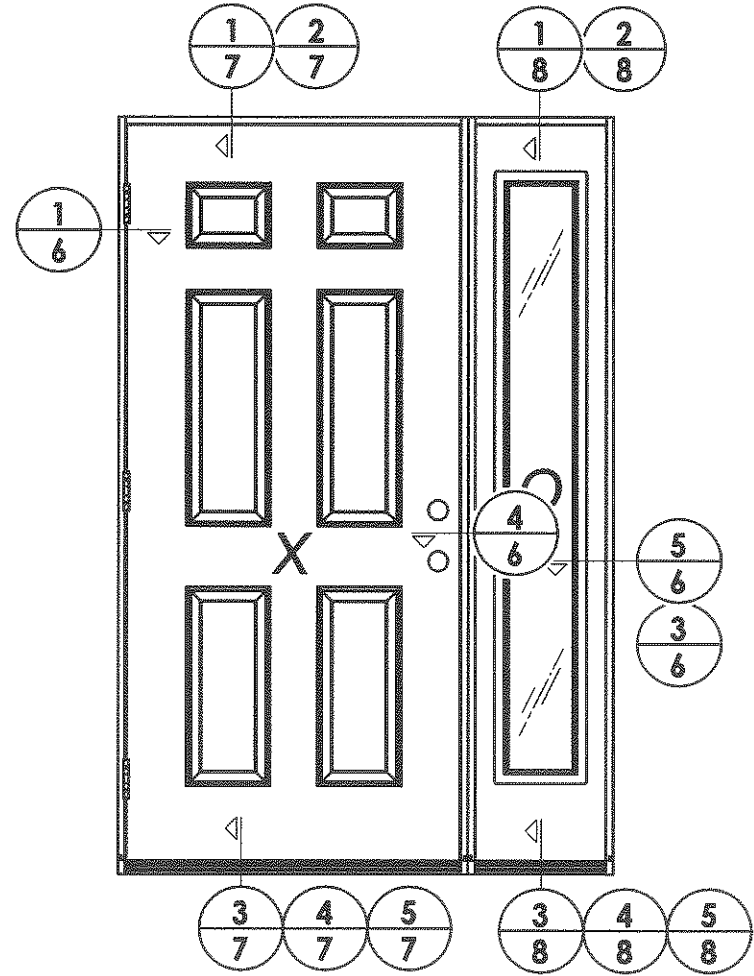
Documents Prepared By:

RW BUILDING CONSULTANTS, INC.
 P.O. Box 230 Valrico FL, 33595
 Phone No.: 813.659.9197
 Florida Board of Professional Engineers
 Certificate Of Authorization No. 9813
LFS 2.29.12
 Lyndon F. Schmidt, P.E. No. 43409

PRODUCT: TRINITY GLASS INT'L
 PART OR ASSEMBLY:
 TYPICAL ELEVATION, DESIGN PRESSURES & GENERAL NOTES

| NO. | DATE | BY | REVISIONS |
|-----|------|----|-----------|
| | | | |
| | | | |
| | | | |
| | | | |

DATE: 02/27/12
 SCALE: N.T.S.
 DWG. BY: JK
 CHK. BY: LFS
 DRAWING NO.: FL-15255.11
 SHEET 1 OF 12



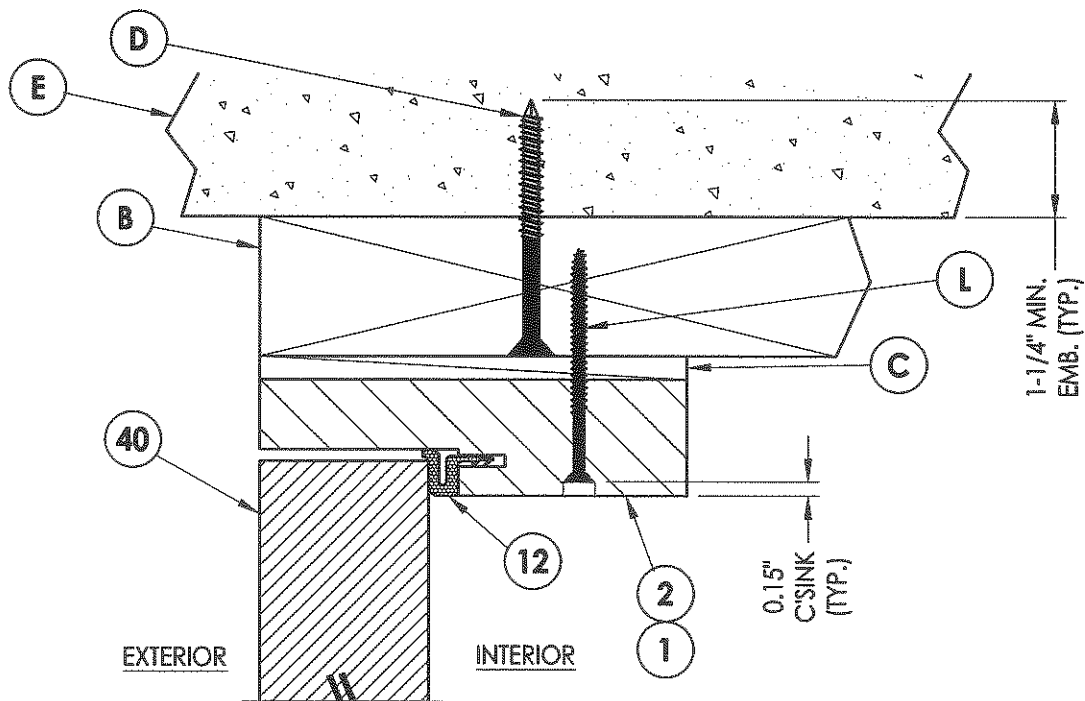
DATE: 02/27/12
 SCALE: N.T.S.
 DWG. BY: JK
 CHK. BY: LFS
 DRAWING NO.: FL-15255.11
 SHEET 5 OF 12

| NO. | DATE | REVISIONS | BY |
|-----|------|-----------|----|
| | | | |

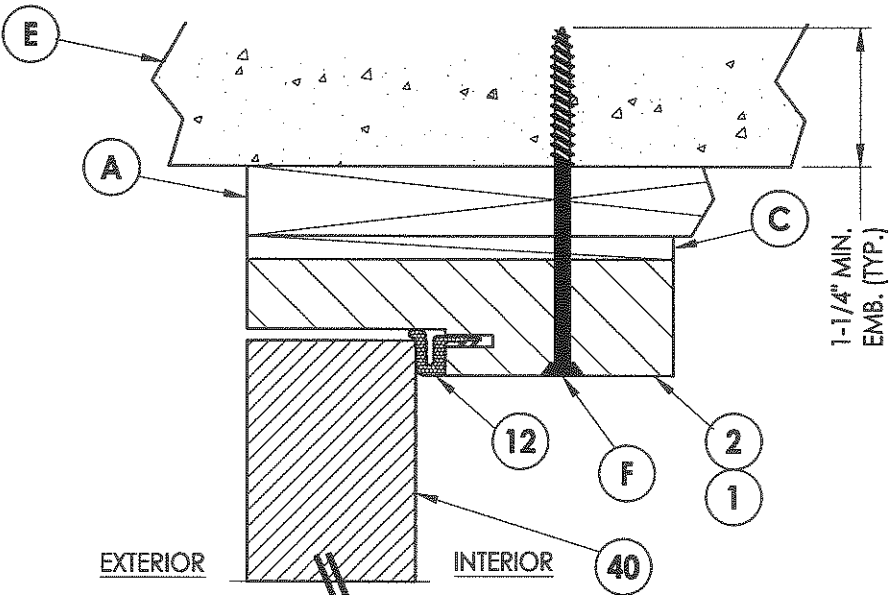
PRODUCT: TRINITY GLASS INT'L
 PART OR ASSEMBLY: ELEVATIONS

Documents Prepared By:

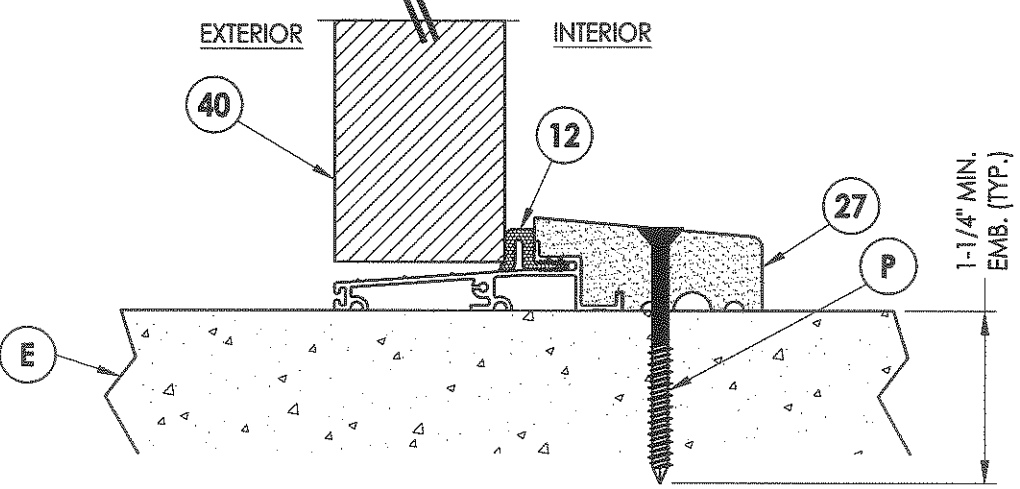
RW
 BUILDING CONSULTANTS, INC.
 P.O. Box 230 Valrico FL 33595
 Phone No.: 813.659.9197
 Florida Board of Professional Engineers
 Certificate Of Authorization No. 9813
67-562-29.12
 Lyndbn F. Schmidt, P.E. No. 43409



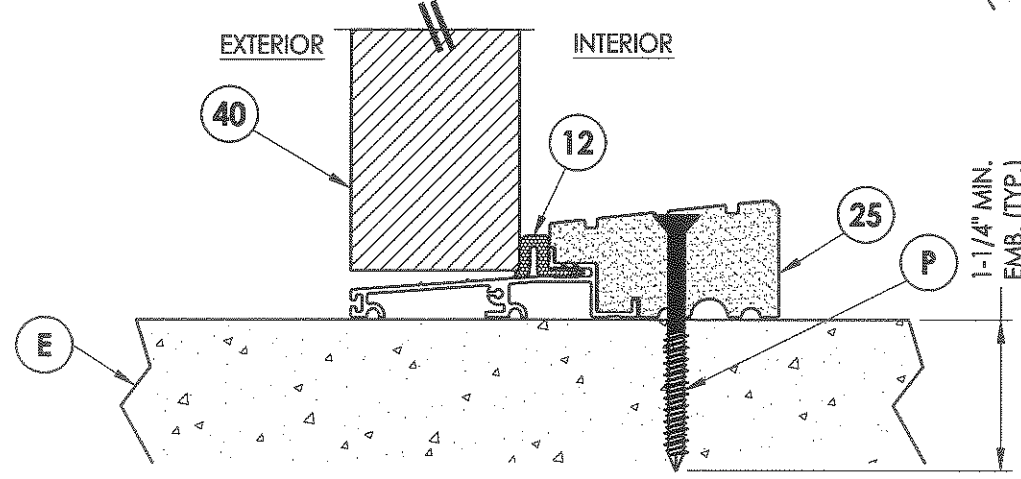
1 VERTICAL CROSS SECTION
7 Outswing shown
 Inswing also approved



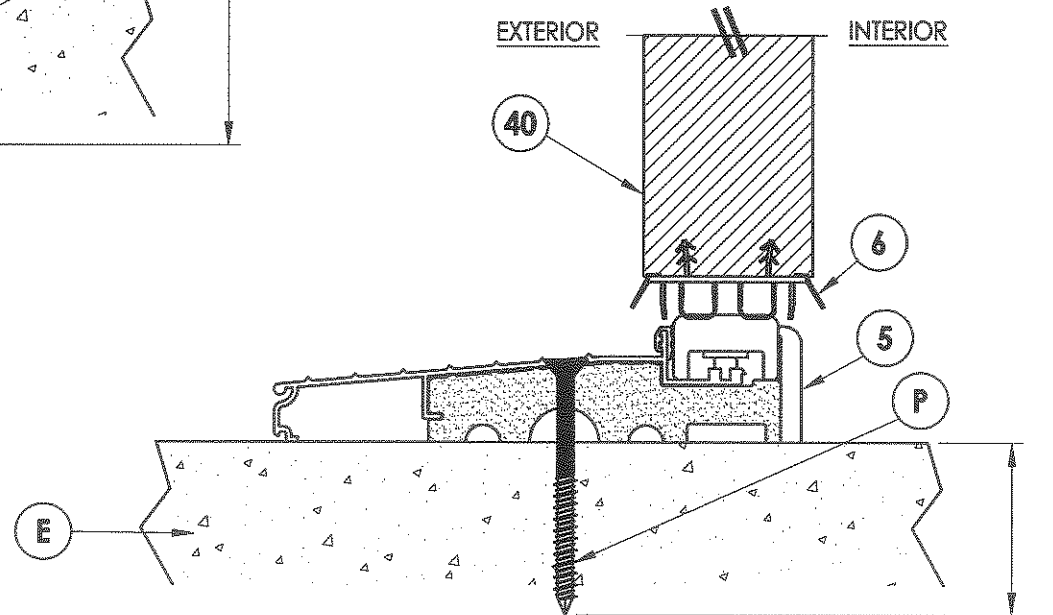
2 VERTICAL CROSS SECTION
7 Shown w/1X sub-buck



4 VERTICAL CROSS SECTION
7 Outswing sill



3 VERTICAL CROSS SECTION
7 Outswing sill - high dam



5 VERTICAL CROSS SECTION
7 Inswing sill

Documents Prepared By:

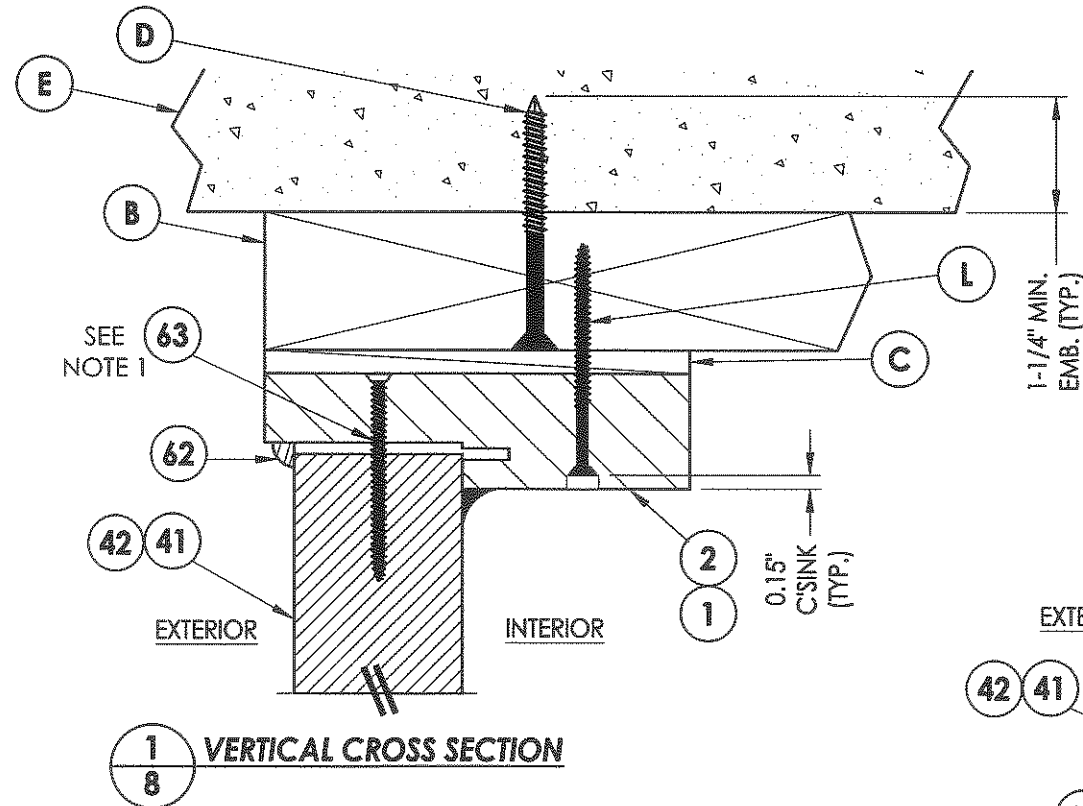
RW BUILDING CONSULTANTS, INC.
 P.O. Box 230 Vairico FL 33595
 Phone No.: 813.659.9197
 Florida Board of Professional Engineers
 Certificate of Authorization No. 9813
 Lyndon F. Schmidt, P.E. No. 43409

PRODUCT: TRINITY GLASS INT'L

PART OR ASSEMBLY: VERTICAL CROSS SECTIONS

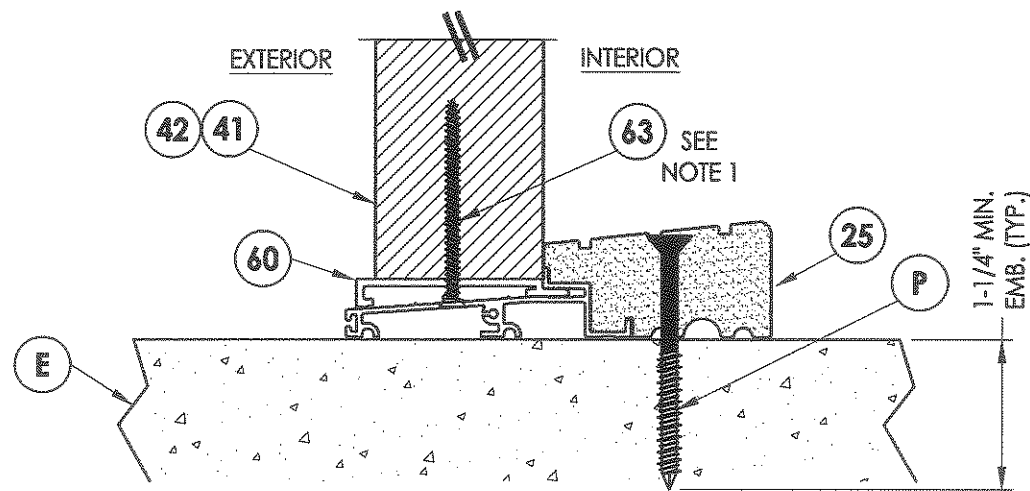
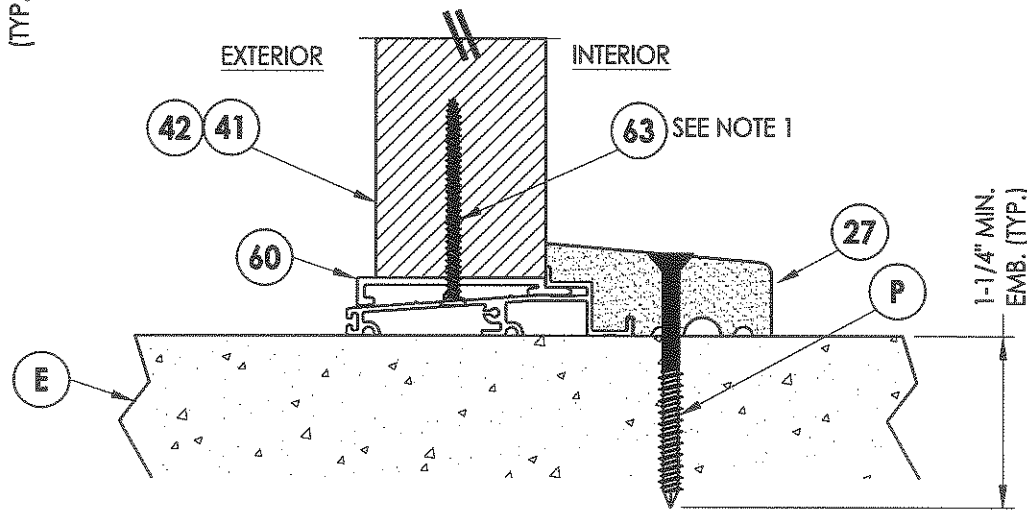
| NO. | DATE | BY | REVISIONS |
|-----|------|----|-----------|
| | | | |
| | | | |
| | | | |

DATE: 02/27/12
 SCALE: N.T.S.
 DWG. BY: JK
 CHK. BY: LFS
 DRAWING NO.: FL-15255.11
 SHEET 7 OF 12

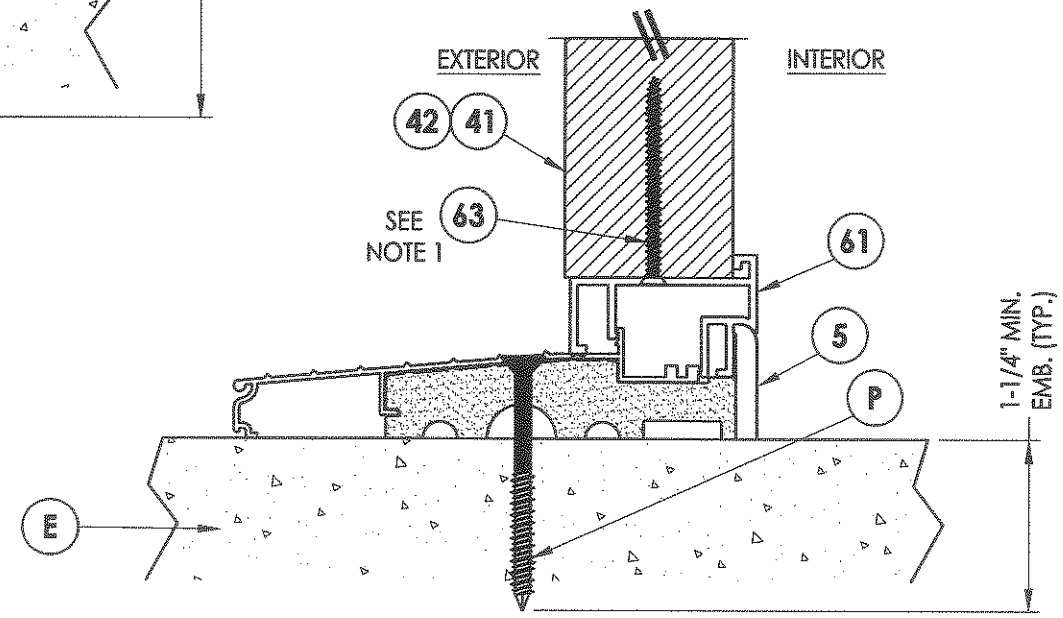


NOTE:

1. Screws thru head and sill jamb located 3" from each end and on center line.



4 VERTICAL CROSS SECTION
8 Outswing sill



Documents Prepared By:

RW BUILDING CONSULTANTS, INC.
P.O. Box 230 Valrico FL 33595
Phone No.: 813.659.9197
Florida Board of Professional Engineers
Certificate Of Authorization No. 9813

Lyndon F. Schmidt, P.E. No. 43409

PRODUCT: TRINITY GLASS INT'L

PART OR ASSEMBLY: VERTICAL CROSS SECTIONS

| NO. | DATE | BY | REVISIONS |
|-----|------|----|-----------|
| | | | |
| | | | |
| | | | |

DATE: 02/27/12

SCALE: N.T.S.

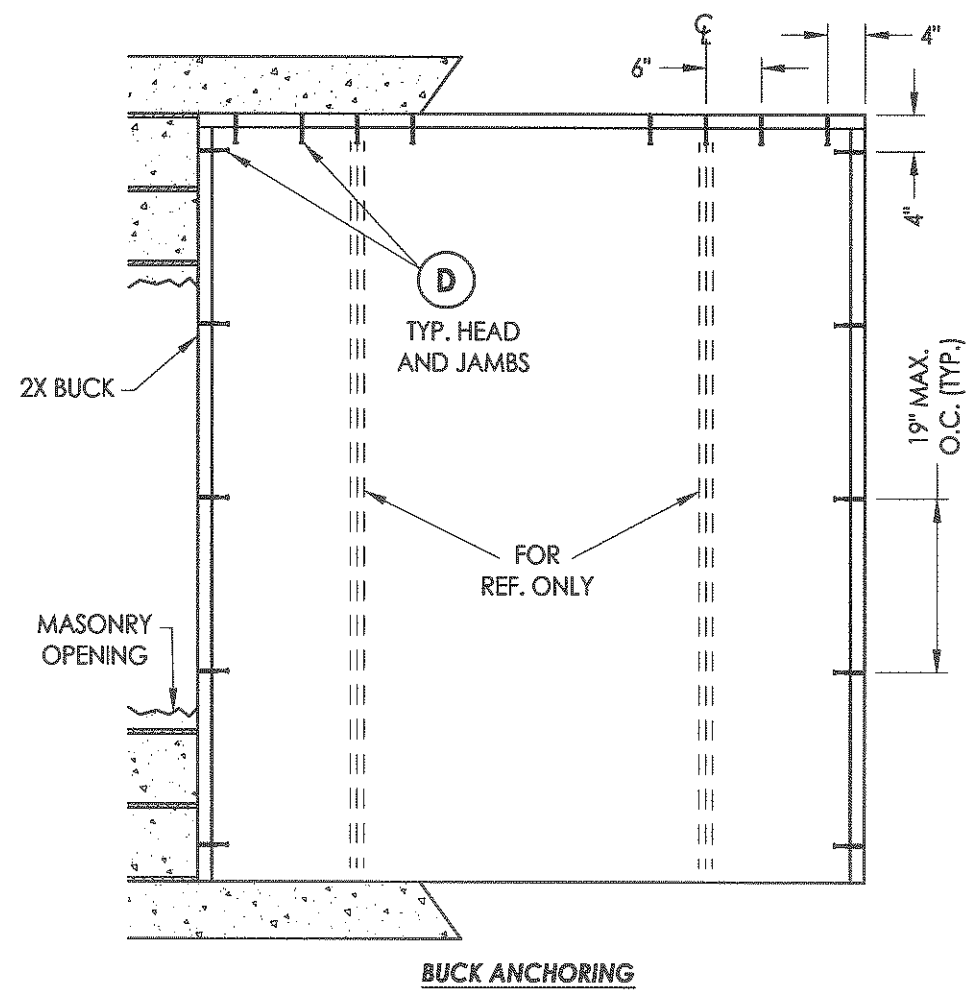
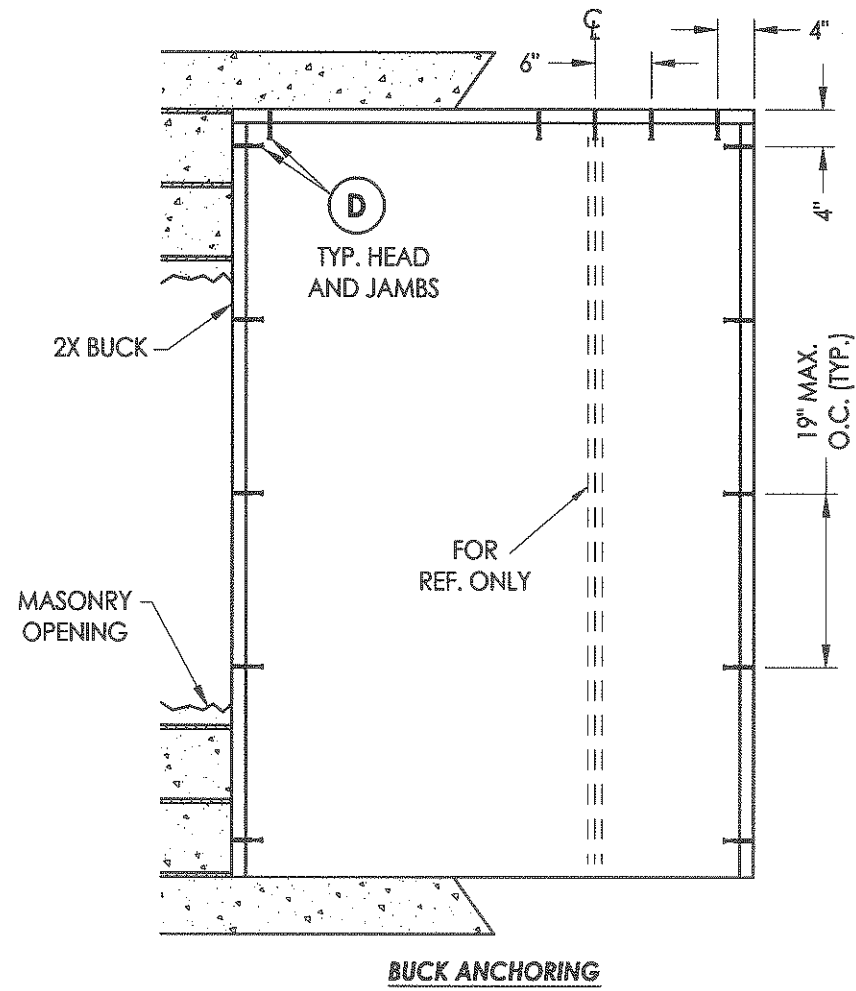
DWG. BY: JK

CHK. BY: LFS

DRAWING NO.:

FL-15255.11

SHEET 8 OF 12



CONCRETE ANCHOR NOTES:

1. Substitution of equal concrete anchors from a different supplier may have different edge distance and center distance requirements.
2. Concrete anchor locations at the corners may be adjusted to maintain the min. edge distance to mortar joints. If concrete anchor locations noted as "MAX. ON CENTER" must be adjusted to maintain the min. edge distance to mortar joints, additional concrete anchors may be required to ensure the "MAX. ON CENTER" dimensions are not exceeded.
3. Concrete anchor table:

| ANCHOR TYPE | ANCHOR SIZE | MIN. EMBEDMENT | MIN. CLEARANCE TO MASONRY EDGE | MIN. CLEARANCE TO ADJACENT ANCHOR |
|-------------|-------------|----------------|--------------------------------|-----------------------------------|
| ITW | 1/4" | 1-1/4" | 2-1/2" | 3" |
| ELCO | 1/4" | 1-1/4" | 1" | 4" |

Documents Prepared By:

RW BUILDING CONSULTANTS, INC.
 P.O. Box 230 Valrico FL, 33595
 Phone No.: 813.659.9197
 Florida Board of Professional Engineers
 Certificate Of Authorization No. 9813

Lyndon F. Schmidt, P.E. No. 43409

PRODUCT: TRINITY GLASS INT'L

PART OR ASSEMBLY: BUCK ANCHORING

| NO. | DATE | BY |
|-----|------|----|
| | | |
| | | |
| | | |
| | | |

DATE: 02/27/12

SCALE: N.T.S.

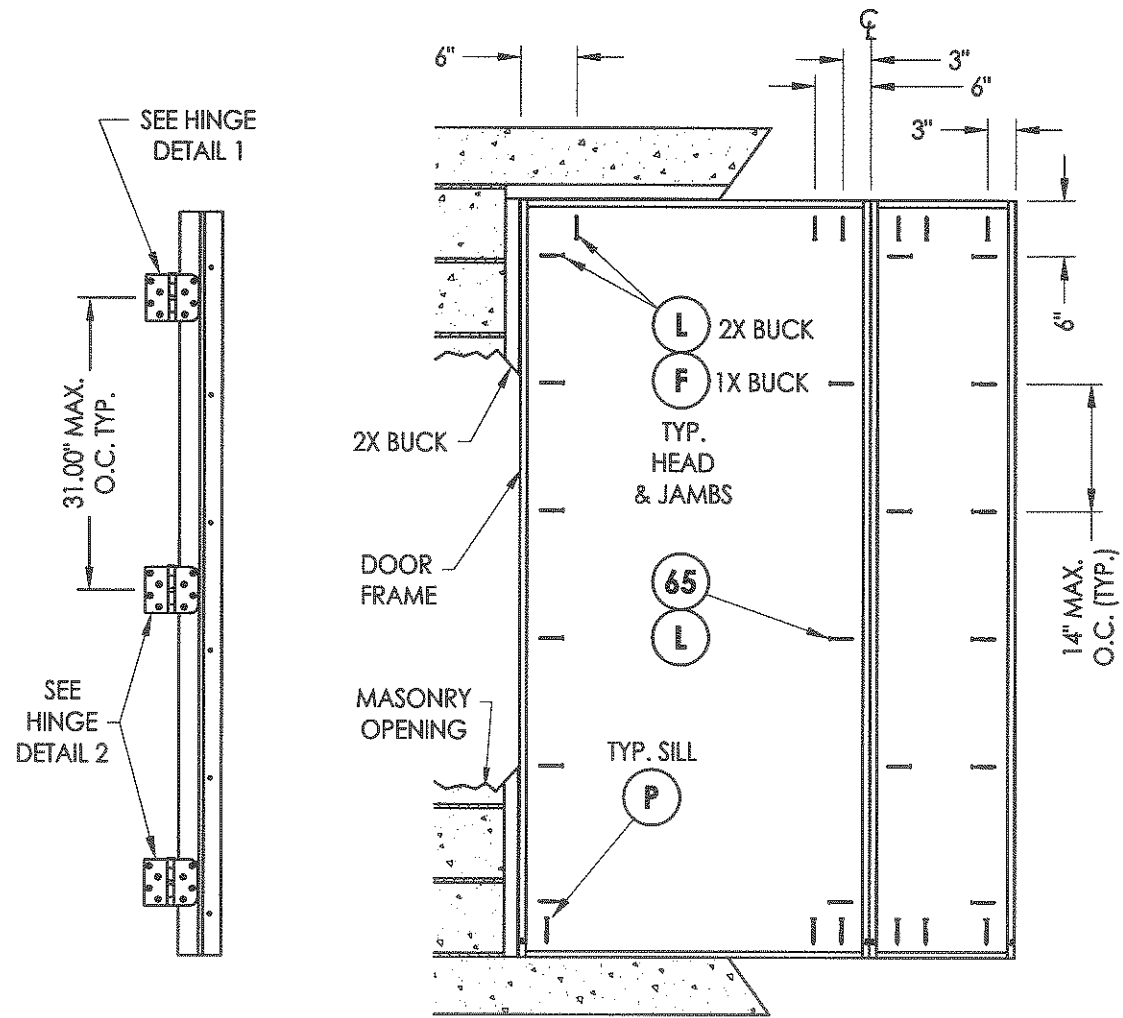
DWG. BY: JK

CHK. BY: LFS

DRAWING NO.:

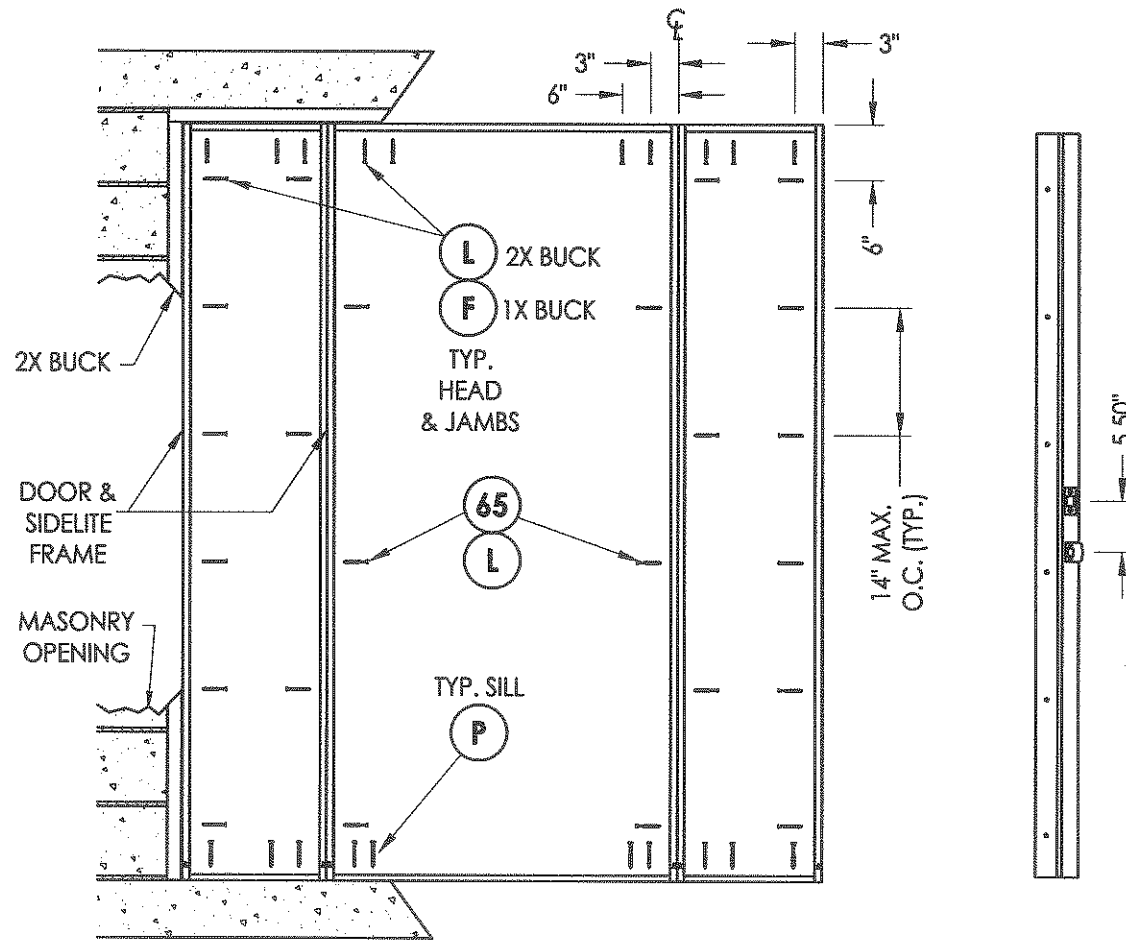
FL-15255.11

SHEET 9 OF 12



HINGE JAMB

FRAME ANCHORING
Masonry construction



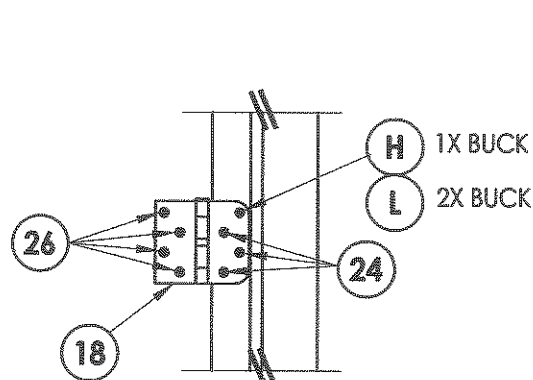
FRAME ANCHORING
Masonry construction

STRIKE JAMB

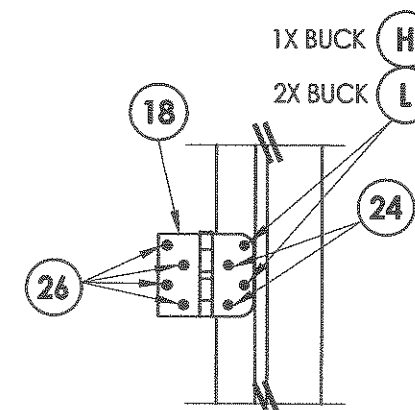
CONCRETE ANCHOR NOTES:

1. Substitution of equal concrete anchors from a different supplier may have different edge distance and center distance requirements.
2. Concrete anchor locations at the corners may be adjusted to maintain the min. edge distance to mortar joints. If concrete anchor locations noted as "MAX. ON CENTER" must be adjusted to maintain the min. edge distance to mortar joints, additional concrete anchors may be required to ensure the "MAX. ON CENTER" dimensions are not exceeded.
3. Concrete anchor table:

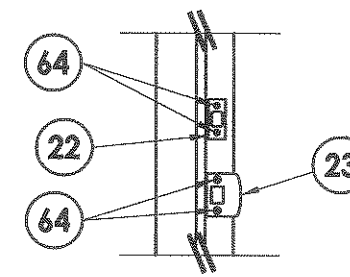
| ANCHOR TYPE | ANCHOR SIZE | MIN. EMBEDMENT | MIN. CLEARANCE TO MASONRY EDGE | MIN. CLEARANCE TO ADJACENT ANCHOR |
|-------------|-------------|----------------|--------------------------------|-----------------------------------|
| ITW | 1/4" | 1-1/4" | 2-1/2" | 3" |
| ELCO | 1/4" | 1-1/4" | 1" | 4" |
| ITW | 3/16" | 1-1/4" | 2-5/8" | 2-1/4" |



HINGE DETAIL 2



HINGE DETAIL 1



STRIKE PLATE DETAIL

Documents Prepared By:

PRODUCT: TRINITY GLASS INT'L

PART OR ASSEMBLY:

FRAME ANCHORING

| NO. | DATE | BY | REVISIONS |
|-----|------|----|-----------|
| | | | |

DATE: 02/27/12

SCALE: N.T.S.

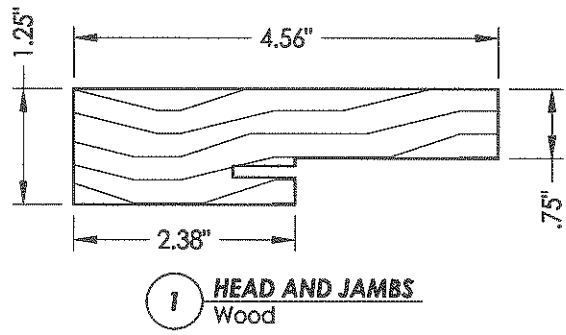
DWG. BY: JK

CHK. BY: LFS

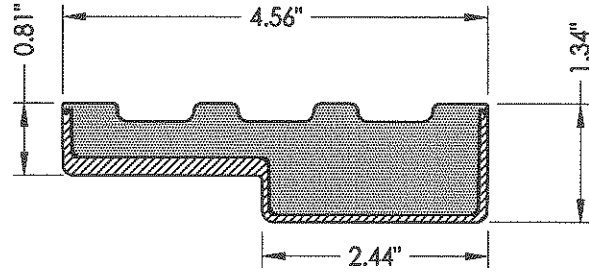
DRAWING NO.: FL-15255.11

SHEET 10 OF 12

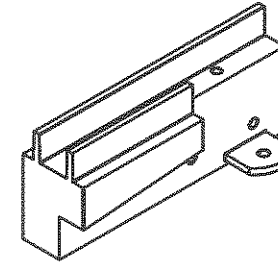
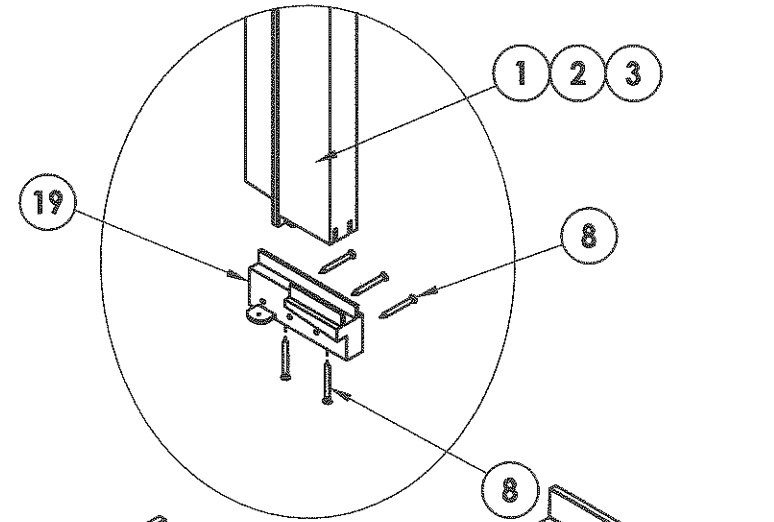
Building Consultants, Inc.
P.O. Box 230 Valrico FL 33595
Phone No.: 813.659.9197
Florida Board of Professional Engineers
Certificate Of Authorization No. 9813
Lyndon F. Schmidt, P.E. No. 43409



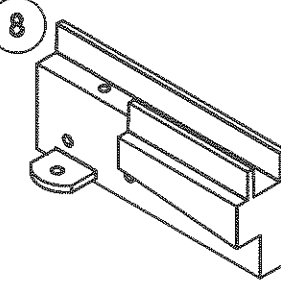
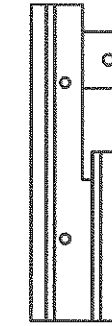
1 HEAD AND JAMBS
Wood



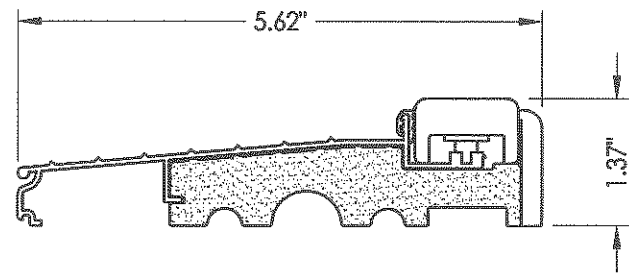
2 HEAD AND JAMBS
Composite PVC Base
w/ Fiberglass Wrap



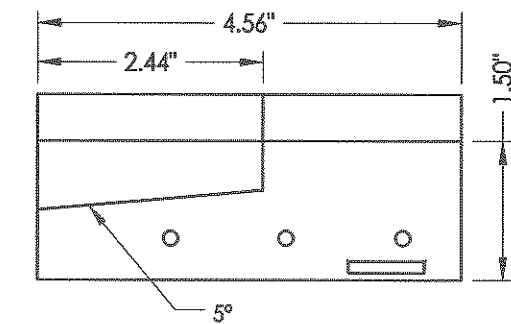
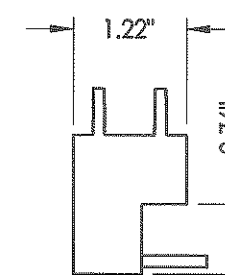
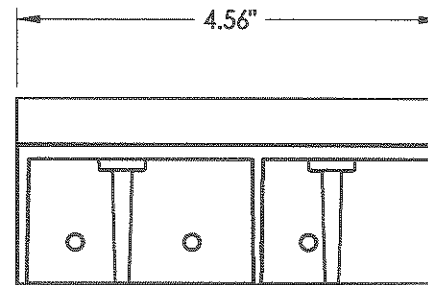
SILLKEY, LEFT
SCALE: NONE



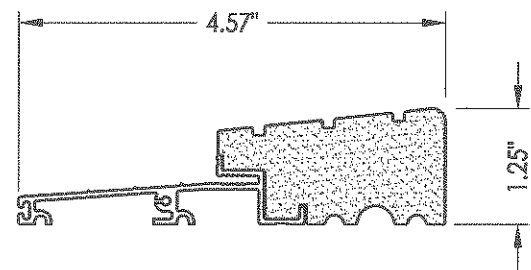
SILLKEY, RIGHT
SCALE: NONE



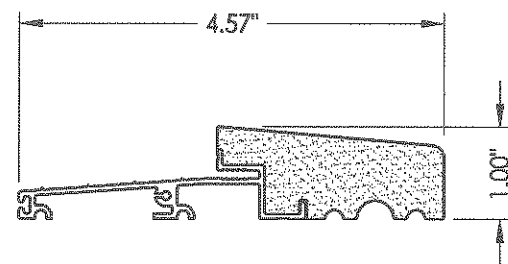
5 INSWING THRESHOLD



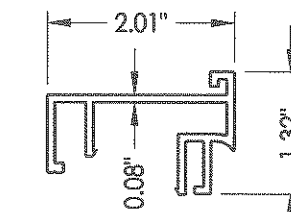
19 SILLKEY DETAILS
Optional



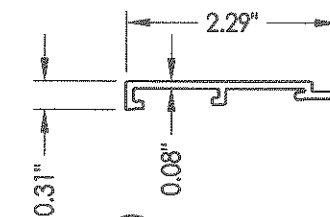
25 OUTSWING THRESHOLD
High-dam



27 OUTSWING THRESHOLD



61 SIDELITE SPACER
Inswing



60 SIDELITE SPACER
Outswing

| | |
|-------------------|---------------------|
| PRODUCT: | TRINITY GLASS INT'L |
| PART OR ASSEMBLY: | COMPONENTS |

| NO. | DATE | BY | REVISIONS |
|-----|------|----|-----------|
| | | | |
| | | | |
| | | | |
| | | | |

| | |
|--------------|-------------|
| DATE: | 02/27/12 |
| SCALE: | N.T.S. |
| DWG. BY: | JK |
| CHK. BY: | LFS |
| DRAWING NO.: | FL-15255.11 |
| SHEET | 11 OF 12 |

Documents Prepared By:
RW BUILDING CONSULTANTS, INC.
 P.O. Box 230 Vairico FL 33595
 Phone No.: 813.659.9197
 Florida Board of Professional Engineers
 Certificate Of Authorization No. 9813
 Lyndon F. Schmidt, P.E. No. 43408

| BILL OF MATERIALS | | |
|-------------------|--|-----------------|
| ITEM # | DESCRIPTION | MATERIAL |
| A | 1X BUCK SG >= 0.55 | WOOD |
| B | 2X BUCK SG >= 0.55 | WOOD |
| C | 1/4" MAX. SHIM SPACE | - |
| D | 1/4" X 2-3/4" PFH ELCO OR ITW CONCRETE SCREW | STEEL |
| E | MASONRY - 3,192 PSI MIN. CONCRETE CONFORMING TO ACI 301 OR HOLLOW BLOCK CONFORMING TO ASTM C90 | CONCRETE |
| F | 1/4" X 3-3/4" PFH ITW CONCRETE SCREW | STEEL |
| H | 1/4" X 3-1/4" PFH ITW CONCRETE SCREW | STEEL |
| J | #9 X 2-1/4" PFH WS | STEEL |
| L | #8 X 2-1/2" PFH WS | STEEL |
| P | 1/4" X 2-3/4" PFH ELCO OR ITW CONCRETE SCREW | STEEL |
| 1 | JAMB (FINGER-JOINT PINE - SG >= 0.42) | WOOD |
| 2 | JAMB | FIBERGLASS/COMP |
| 5 | INSWING THRESHOLD ALUMINUM W/ COMPOSITE SUBSTRATE | ALUMINUM |
| 6 | DOOR BOTTOM SWEEP | PVC |
| 8 | #6 X 1-1/4 PFH DRYWALL SCREW | STEEL |
| 12 | WEATHER STRIP QEBD650 Q-LON | - |
| 18 | 3.983" X 4.0" HINGE MIN 0.098" THICK | STEEL |
| 19 | SILLKEY | PC/ASA |
| 22 | DEADBOLT STRIKE PLATE | STEEL |
| 23 | STRIKE PLATE | STEEL |
| 24 | #9 X 5/8" PFH WS | STEEL |
| 25 | OUTSWING HIGH-DAM THRESHOLD ALUMINUM W/ COMPOSITE SUBSTRATE | ALUM./ COMP. |
| 26 | #9 X 1.0" PFH WS | STEEL |
| 27 | OUTSWING THRESHOLD ALUMINUM W/ COMPOSITE SUBSTRATE | ALUM./ COMP. |
| 40 | DOOR PANEL - SEE DOOR PANEL DETAIL SHEET FOR CONSTRUCTION DETAILS | - |
| 41 | SIDELITE PANEL - SEE SIDELITE PANEL DETAIL SHEET FOR CONSTRUCTION DETAILS | - |
| 42 | SIDELITE PANEL - SEE SIDELITE PANEL DETAIL SHEET FOR CONSTRUCTION DETAILS | - |
| 60 | SIDELITE SPACER - OUTSWING | PVC |
| 61 | SIDELITE SPACER - INSWING | PVC |
| 62 | QUARTER ROUND | WOOD |
| 63 | #8 X 2-1/4" PFH WOOD SCREW | STEEL |
| 64 | #8 X 2" PFH WOOD SCREW | STEEL |
| 65 | #10 X 2" PFH WOOD SCREW | STEEL |

Documents Prepared By:
R.W. BUILDING CONSULTANTS, INC.
 P.O. Box 230 Valrico FL 33595
 Phone No.: 813.659.9197
 Florida Board of Professional Engineers
 Certificate Of Authorization, No. 9813
Lyndon F. Schmidt 2-29-12
 Lyndon F. Schmidt, P.E. No. 43409

PRODUCT: TRINITY GLASS INT'L
 PART OR ASSEMBLY: BILL OF MATERIALS

| NO. | DATE | BY | REVISIONS |
|-----|------|----|-----------|
| | | | |
| | | | |
| | | | |
| | | | |

DATE: 02/27/12
 SCALE: N.T.S.
 DWG. BY: JK
 CHK. BY: LFS
 DRAWING NO.: FL-15255.11
 SHEET 12 OF 12